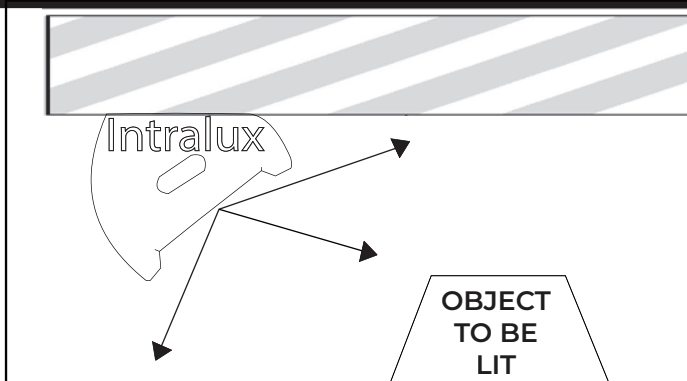


DATE	June 2024	CODE	SLLED-I-2	A
------	-----------	------	-----------	---

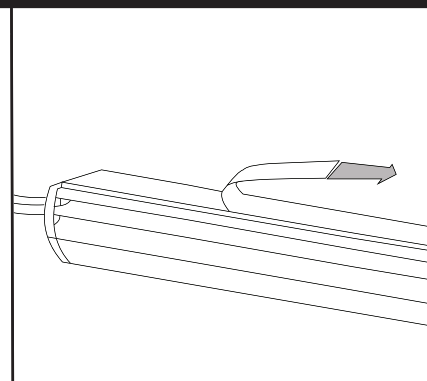


Clean mounting surface thoroughly to ensure that it is free from dirt, dust and grease.

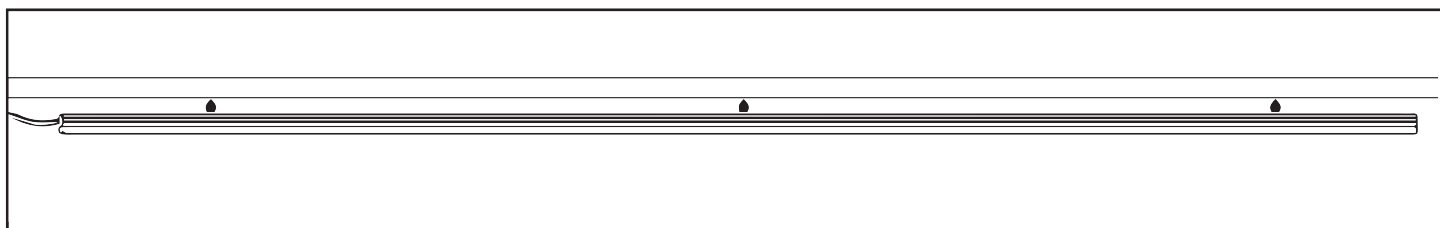
Surface must be dry before commencing installation.



Slite LED is designed to be positioned at the front edge of a shelf to give maximum illumination to the shelf below.

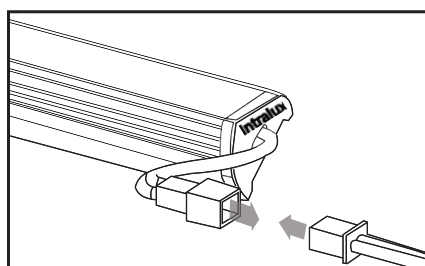


Carefully peel protective film from adhesive tape along whole length of the fixture.

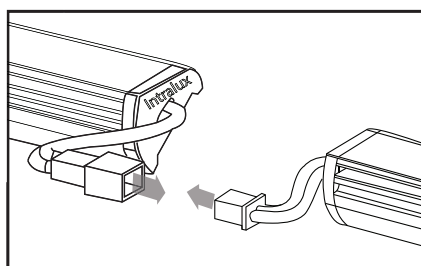


Carefully position fixture so that it is parallel with shelf edge, press adhesive tape to mounting surface, move along fixture applying pressure to ensure that tape has adhered to mounting surface along the whole length of the fixture.

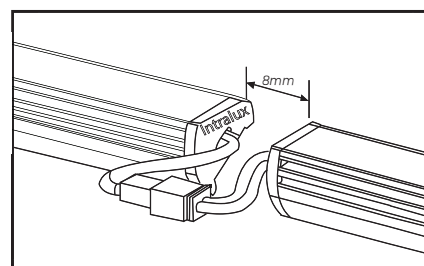
Do not put any pressure on the fixture after mounting for at least 72 hours to ensure full bond strength has been achieved.



1. Connect the starter lead to the fixture located closest to the power supply unit (PSU) location.



2. Interconnect modules utilizing the 'plug+ go' micro connectors as shown.

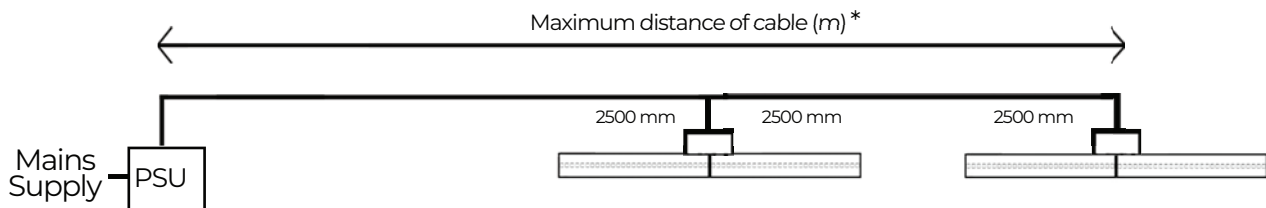


3. Finalise connection using micro connectors on each end of the fixture.

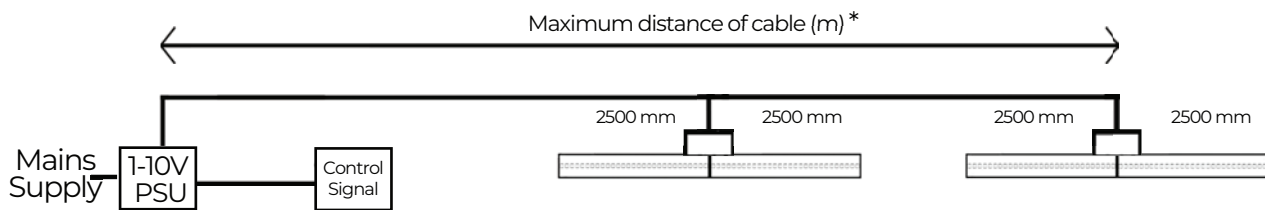
4. Mount products so that cables and connectors will not come under excessive stress, **interconnected fixtures must not have a gap less than 8mm between ends.** Ensure accessories, cables and connectors are positioned such that they will not impede output and cast a shadow.

DATE	June 2024	CODE	SLLED-I-2	A
------	-----------	------	------------------	----------

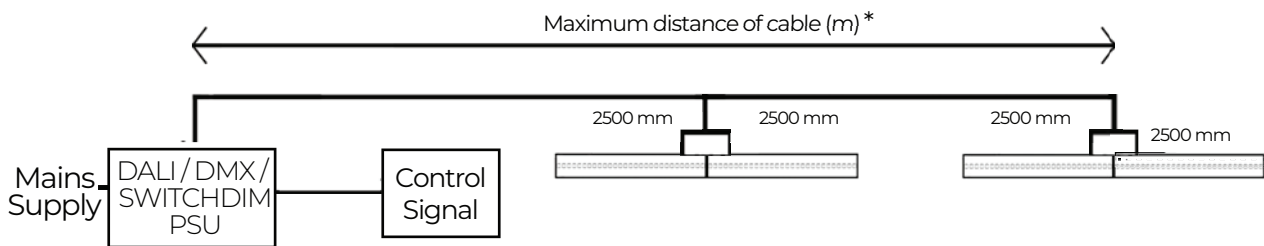
FIXED OUTPUT - TYPICAL WIRING CONFIGURATION



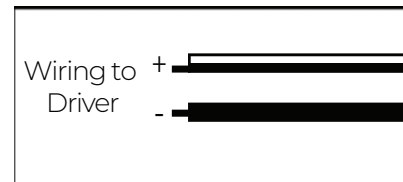
1-10V - TYPICAL WIRING CONFIGURATION



DALI / DMX / SWITCHDIM - TYPICAL WIRING CONFIGURATION USING SINGLE CHANNEL DRIVER



* Power supply unit (PSU) output cable size (mm ²) / Max distance (m) recommendations:	0.5mm ²	9 metres
	0.75mm ²	14 metres
	1.0mm ²	19 metres
	1.5mm ²	28 metres



CAUTION:

If requiring more than 5 metres of Slite LED interconnected, use a centre feed driver installation method.